

# 168# Geo Crossover Signal V.2

## TMA Band Filtered with Laguerre

### Trend Reversal Price Action

Submit Bty Janus Trader

Geo Crossover Signal V.2 is a strategy trend reversal based on triangular Moving Average filtered by Laguerre filter and MACD 2 line. The purpose of this trading system is to create an efficient system that not only wants to hit a good first entry, but also a second entry if a trend has been created. I think I have succeeded in this the system seems to me very balanced and easy to manage. In a certain sense I say that this strategy is a derivation of future projections (the other trading system) but with a goal also the second entry.

Time frame 30 min, H1, e H4.

Currency pairs Minors, Majors, Gold, Oil, and Commodities.

### Metatrader 4 Indicators

Target Bands (TMA), Length 56, Deviation 2.5).

31 level ZZ semafor (default setting in this template).

Binary Viper 2 length 100, filter 2.

Laguerre filter 2.1 /default setting).

Breakout signal arrow.

Pivot Volty.

MACD 2 line (18, 26, 18).

### Trading rules Geo Crossover Signal V.2

For best trades at 30 min and H1 time frames you can operate filtering at 4H and trade in the same direction.

## **Buy**

### **First Entry**

1. Yellow square with black buy arrow.
2. Breakout Arrow buy.
3. Candle closes above the line of the Laguerre indicator or MACD with green histogram.

### **Second entry**

Following the direction of the upward trend the same conditions apply, but first the price must touch the lower band.

Price touches lower band or comes close to it.

A black buy arrow or a circle appears.

Finally the price closes above the Laguerre filter line.

## **Sell**

### **First Entry**

1. Yellow square with black sell arrow.
2. Breakout Arrow sell.
3. Candle closes below the line of the Laguerre indicator or MACD with red histogram.

### **Second entry**

Following the direction of the downward trend the same conditions apply, but first the price must touch the upper band.

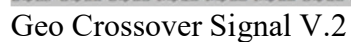
Price touches upper band or comes close to it.

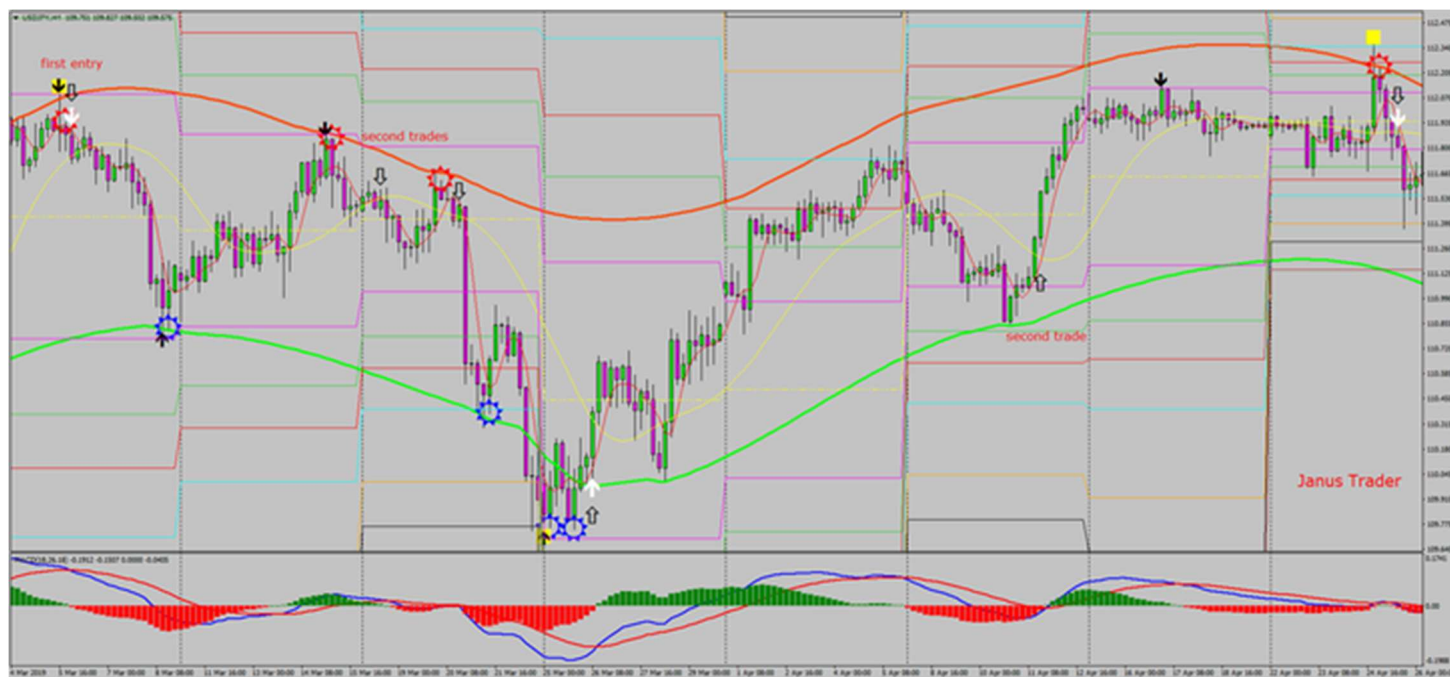
A black sell arrow or a circle appears.

## Exit options:

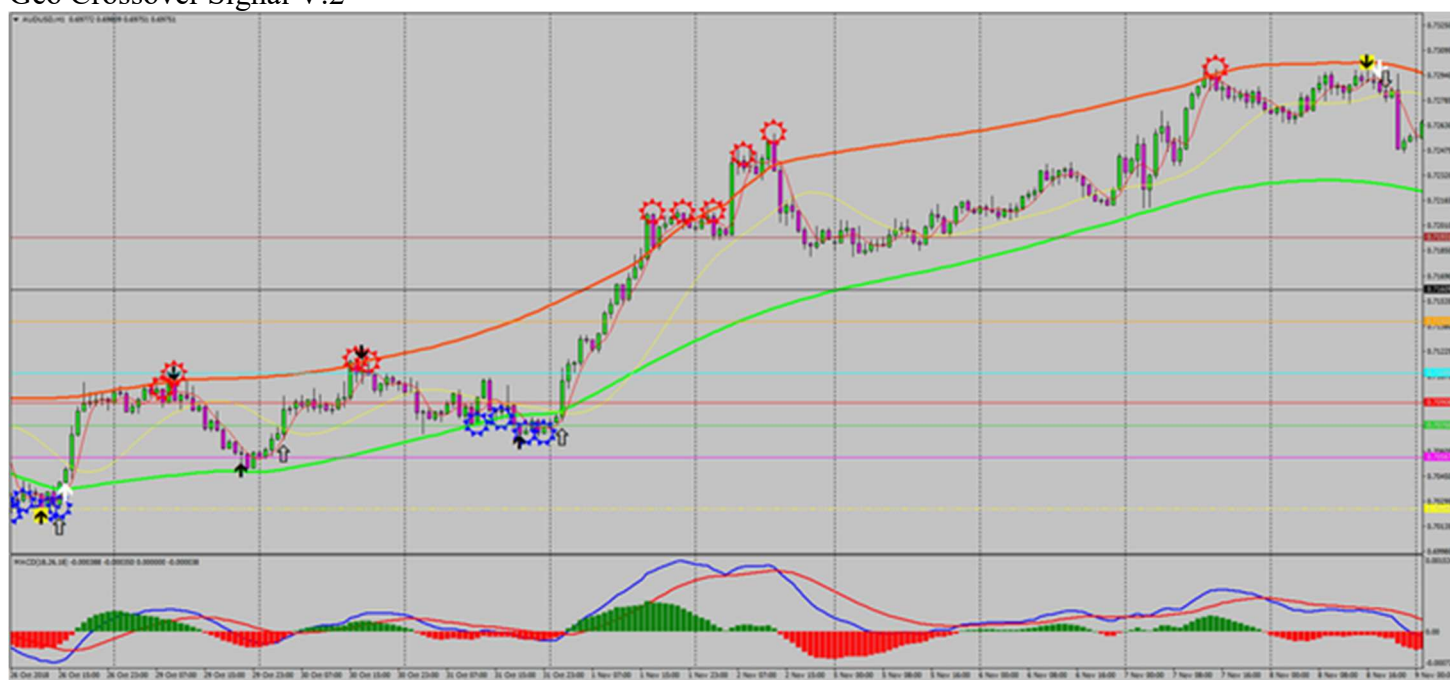
Place the initial stop loss at the previous swing High/low.

In the pictures Geo Crossover Signal V.2 in action.





Geo Crossover Signal V.2



Geo Crossover Signal V.2



Geo Crossover Signal V.2